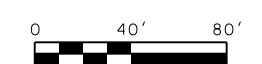
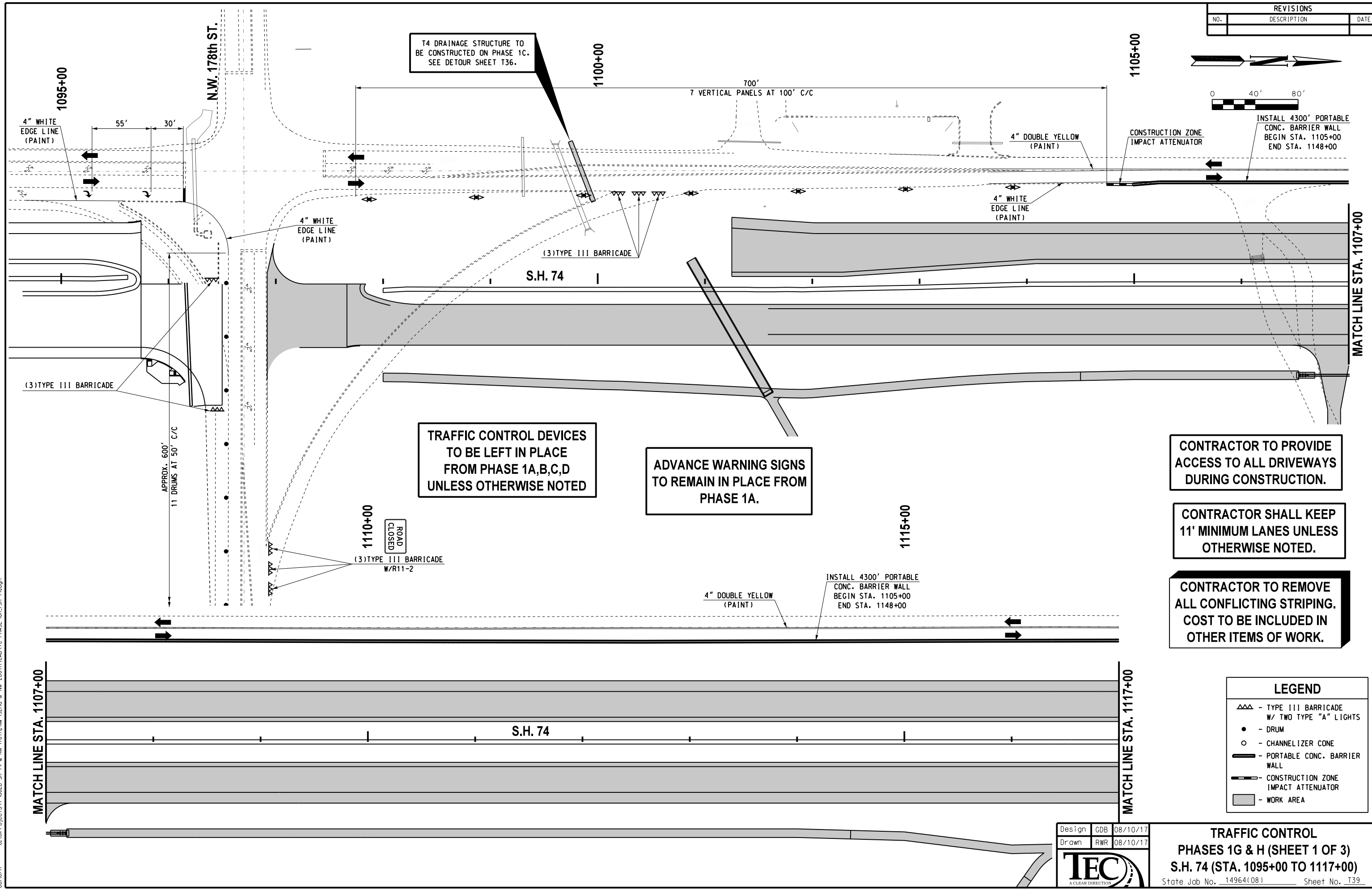


| REVISIONS | | |
|-----------|-------------|------|
| NO. | DESCRIPTION | DATE |
| | | |



T4 DRAINAGE STRUCTURE TO BE CONSTRUCTED ON PHASE 1C. SEE DETOUR SHEET T36.



TRAFFIC CONTROL DEVICES TO BE LEFT IN PLACE FROM PHASE 1A, B, C, D UNLESS OTHERWISE NOTED

ADVANCE WARNING SIGNS TO REMAIN IN PLACE FROM PHASE 1A.

CONTRACTOR TO PROVIDE ACCESS TO ALL DRIVEWAYS DURING CONSTRUCTION.

CONTRACTOR SHALL KEEP 11' MINIMUM LANES UNLESS OTHERWISE NOTED.

CONTRACTOR TO REMOVE ALL CONFLICTING STRIPING. COST TO BE INCLUDED IN OTHER ITEMS OF WORK.

| LEGEND | |
|--------|---|
| | - TYPE III BARRICADE W/ TWO TYPE "A" LIGHTS |
| | - DRUM |
| | - CHANNELIZER CONE |
| | - PORTABLE CONC. BARRIER WALL |
| | - CONSTRUCTION ZONE IMPACT ATTENUATOR |
| | - WORK AREA |

| | | |
|--------|-----|----------|
| Design | GDB | 08/10/17 |
| Drawn | RWR | 08/10/17 |



TRAFFIC CONTROL
PHASES 1G & H (SHEET 1 OF 3)
S.H. 74 (STA. 1095+00 TO 1117+00)
 State Job No. 14964(08) Sheet No. T39

08/10/17 G:\Projects\T-16628 SH 74 @ NW 178th, NW 192nd & NW 206th\CAD\TC PHASE 1G\SH 74.dgn